



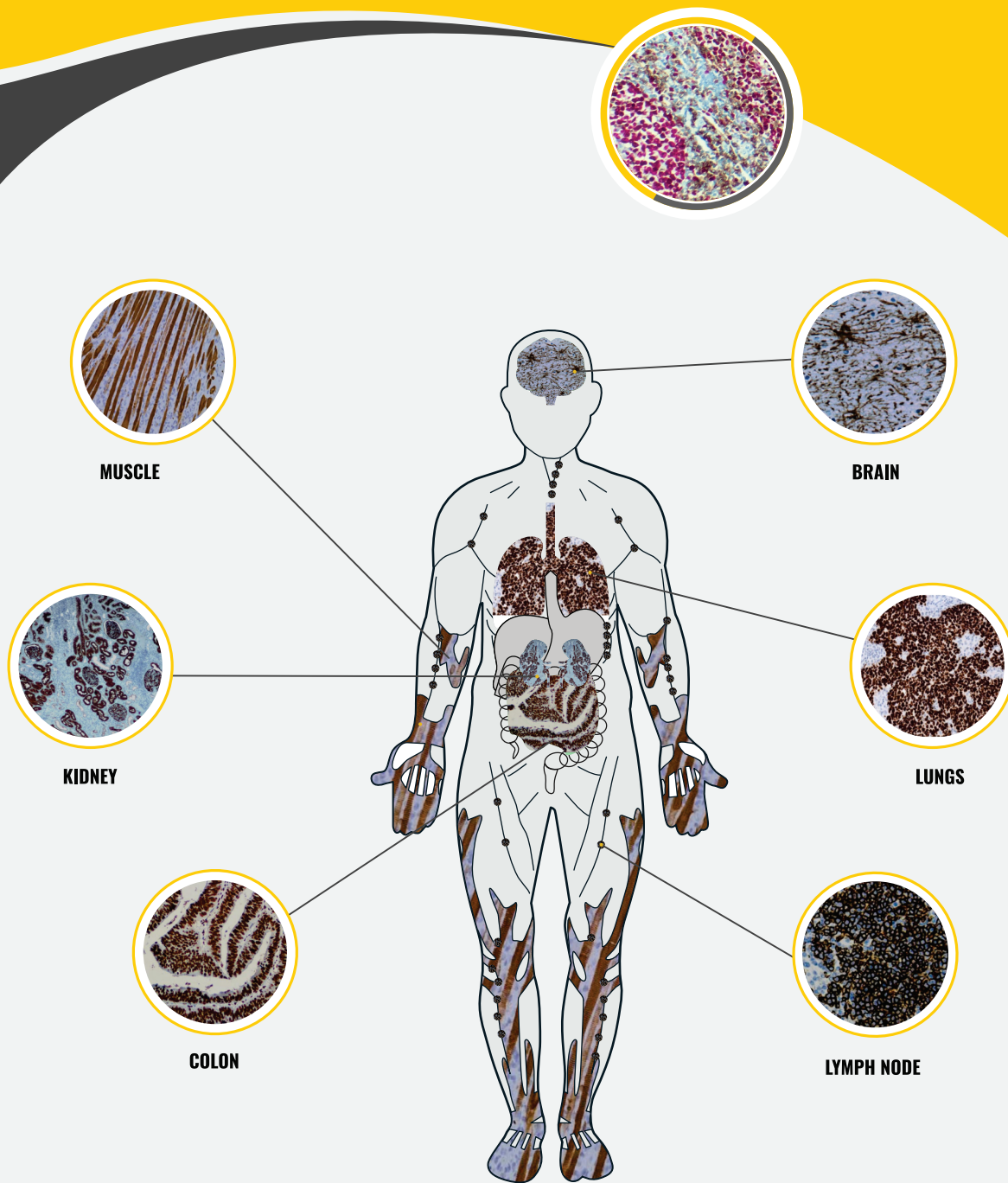
This index lists all products available from Bioheaven360. Please visit the company website for details.

Sl.No	Antibody	Clone	Host Species	Reactive To	Application
1	Anti-alpha smooth muscle Actin (ACTA2) Rabbit Monoclonal Antibody, Clone B3H5.5	B3H5.5	Rabbit	+	IHC-P, IHC-F, ICC & WB
2	Anti-Human Gamma Heavy Chain Rabbit Monoclonal Antibody, Clone B2H1.8	B2H1.8	Rabbit	+	IHC-P, IHC-F, ICC & WB
3	Anti-Human Kappa Light Chain Rabbit Monoclonal Antibody, Clone B2H2.8	B2H2.8	Rabbit	+	IHC-P, IHC-F, ICC & WB
4	Anti-Human Lambda Light Chain Rabbit Monoclonal Antibody, Clone B2H2.9	B2H2.9	Rabbit	+	IHC-P, IHC-F, ICC & WB
5	Anti-CD4 Rabbit Monoclonal Antibody, Clone B4H2.5	B4H2.5	Rabbit	+	IHC-P, IHC-F, ICC & WB
6	Anti-PSA (Prostate Specific Antigen) Rabbit Monoclonal Antibody, Clone B4H2.3	B4H2.3	Rabbit	+	IHC-P, IHC-F, ICC & WB
7	Anti-Calretinin (CALB2) Rabbit Monoclonal Antibody, Clone B4H2.6	B4H2.6	Rabbit	+	IHC-P, IHC-F, ICC & WB
8	Anti-COX-2 Rabbit Monoclonal Antibody, Clone B4H4.10	B4H4.10	Rabbit	+	IHC-P, IHC-F, ICC & WB
9	Anti-p504s/AMACR Rabbit Monoclonal Antibody, Clone B4H4.11	B4H4.11	Rabbit	+	IHC-P, IHC-F, ICC & WB
10	Anti-Cytokeratin 17 (CK-17) Rabbit Monoclonal Antibody, Clone B4H5.3	B4H5.3	Rabbit	+	IHC-P, IHC-F, ICC & WB
11	Anti-MUM1/IRF4 Rabbit Monoclonal Antibody, Clone B4H5.4	B4H5.4	Rabbit	+	IHC-P, IHC-F, ICC & WB
12	Anti-CEA (Carcinoembryonic Antigen) (CD66e) Rabbit Monoclonal Antibody, Clone B4H2.8	B4H2.8	Rabbit	+	IHC-P, IHC-F, ICC & WB
13	Anti-PSMA (Prostate specific membrane antigen) Rabbit Monoclonal Antibody, Clone B4H2.9	B4H2.9	Rabbit	+	IHC-P, IHC-F, ICC & WB
14	Anti-CK-14 (Cytokeratin-14) Rabbit Monoclonal Antibody, Clone B4H2.10	B4H2.10	Rabbit	+	IHC-P, IHC-F, ICC & WB
15	Anti-CD19 Rabbit Monoclonal Antibody, Clone B4H3.4	B4H3.4	Rabbit	+	IHC-P, IHC-F, ICC & WB
16	Anti-CD56 Rabbit Monoclonal Antibody, Clone B4H1.7	B4H1.7	Rabbit	+	IHC-P, IHC-F, ICC & WB
17	Anti-S100B Rabbit Monoclonal Antibody, Clone B4H0.6	B4H0.6	Rabbit	+	IHC-P, IHC-F, ICC & WB
18	Anti-CD79a (C-term) Rabbit Monoclonal Antibody, Clone B3H9.9	B3H9.9	Rabbit	+	IHC-P, IHC-F, ICC & WB
19	Anti-CD34 Rabbit Monoclonal Antibody, Clone B4H0.2	B4H0.2	Rabbit	+	IHC-P, IHC-F, ICC & WB
20	Anti-Vimentin Rabbit Monoclonal Antibody, Clone B1H8.11	B1H8.11	Rabbit	+	IHC-P, IHC-F, ICC & WB
21	Anti-CD29 Rabbit Monoclonal Antibody, Clone B3H8.7	B3H8.7	Rabbit	+	IHC-P, IHC-F, ICC & WB
22	Anti-CK20 (Cytokeratin-20) Rabbit Monoclonal Antibody, Clone B3H8.5	B3H8.5	Rabbit	+	IHC-P, IHC-F, ICC & WB
23	Anti-CD45 Rabbit Monoclonal Antibody, Clone B3H9.3	B3H9.3	Rabbit	+	IHC-P, IHC-F, ICC & WB
24	Anti-CK7 (Cytokeratin-7) Rabbit Monoclonal Antibody, Clone B3H8.6	B3H8.6	Rabbit	+	IHC-P, IHC-F, ICC & WB
25	Anti-CK18 (Cytokeratin-18) Rabbit Monoclonal Antibody, Clone B3H7.11	B3H7.11	Rabbit	+	IHC-P, IHC-F, ICC & WB
26	Anti-Cyclin B1 Rabbit Monoclonal Antibody, Clone B3H8.3	B3H8.3	Rabbit	+	IHC-P, IHC-F, ICC & WB
27	Anti-CD20 Rabbit Monoclonal Antibody, Clone B3H7.4	B3H7.4	Rabbit	+	IHC-P, IHC-F, ICC & WB
28	Anti-CD44 Rabbit Monoclonal Antibody, Clone B3H6.6	B3H6.6	Rabbit	+	IHC-P, IHC-F, ICC & WB
29	Anti-CK8 (Cytokeratin-8) Rabbit Monoclonal Antibody, Clone B3H6.8	B3H6.8	Rabbit	+	IHC-P, IHC-F, ICC & WB
30	Anti-Synaptophysin Rabbit Monoclonal Antibody, Clone B3H5.10	B3H5.10	Rabbit	+	IHC-P, IHC-F, ICC & WB
31	Anti-CD31 (PECAM-1) Rabbit Monoclonal Antibody, Clone B3H4.9	B3H4.9	Rabbit	+	IHC-P, IHC-F, ICC & WB
32	Anti-CD146 Rabbit Monoclonal Antibody, Clone B3H4.11	B3H4.11	Rabbit	+	IHC-P, IHC-F, ICC & WB
33	Anti-Caspase-3 Rabbit Monoclonal Antibody, Clone B3H5.2	B3H5.2	Rabbit	+	IHC-P, IHC-F, ICC & WB
34	Anti-Cyclin D1 (CCND1) Rabbit Monoclonal Antibody, Clone B3H4.3	B3H4.3	Rabbit	+	IHC-P, IHC-F, ICC & WB
35	Anti-Desmin (DESM) Rabbit Monoclonal Antibody, Clone B3H3.6	B3H3.6	Rabbit	+	IHC-P, IHC-F, ICC & WB
36	Anti-E-Cadherin (CDH1) Rabbit Monoclonal Antibody, Clone B3H4.6	B3H4.6	Rabbit	+	IHC-P, IHC-F, ICC & WB
37	Anti-Helicobacter Pylori (H.Pylori) Rabbit Monoclonal Antibody, Clone B5H2.11	B5H2.11	Rabbit	+	IHC-P, IHC-F, ICC & WB
38	Anti-CD13 Rabbit Monoclonal Antibody, Clone B5H0.5	B5H0.5	Rabbit	+	IHC-P, IHC-F, ICC & WB
39	Anti-CD28 Rabbit Monoclonal Antibody, Clone B5H0.6	B5H0.6	Rabbit	+	IHC-P, IHC-F, ICC & WB
40	Anti-Myeloperoxidase (MPO) Rabbit Monoclonal Antibody, Clone B5H0.9	B5H0.9	Rabbit	+	IHC-P, IHC-F, ICC & WB
41	Anti-KI67 Rabbit Monoclonal Antibody, Clone BH360	B360	Rabbit	+	IHC-P, IHC-F, ICC & WB
42	Anti-p40 (deltaNp63) Rabbit Monoclonal Antibody, Clone B4H9.4	B4H9.4	Rabbit	+	IHC-P, IHC-F, ICC & WB
43	Anti-CD1a Rabbit Monoclonal Antibody, Clone B4H9.5	B4H9.5	Rabbit	+	IHC-P, IHC-F, ICC & WB
44	Anti-CD8a Rabbit Monoclonal Antibody, Clone B4H9.9	B4H9.9	Rabbit	+	IHC-P, IHC-F, ICC & WB
45	Anti-CD33 Rabbit Monoclonal Antibody, Clone B4H9.10	B4H9.10	Rabbit	+	IHC-P, IHC-F, ICC & WB
46	Anti-CD71 Rabbit Monoclonal Antibody, Clone B4H8.6	B4H8.6	Rabbit	+	IHC-P, IHC-F, ICC & WB

47	Anti-Chromogranin A Rabbit Monoclonal Antibody, Clone B4H8.7	B4H8.7	Rabbit 🐰	👤 🐷 🐶 +	IHC-P, IHC-F, ICC & WB
48	Anti-CK-10 (Cytokeratin-10) Rabbit Monoclonal Antibody, Clone B4H8.8	B4H8.8	Rabbit 🐰	👤 🐷 🐶 +	IHC-P, IHC-F, ICC & WB
49	Anti-CD5 Rabbit Monoclonal Antibody, Clone B4H5.6	B4H5.6	Rabbit 🐰	👤 🐷 🐶 +	IHC-P, IHC-F, ICC & WB
50	Anti-p53 Rabbit Monoclonal Antibody, Clone B4H8.9	B4H8.9	Rabbit 🐰	👤 🐷 🐶 +	IHC-P, IHC-F, ICC & WB
51	Anti-CD38 Rabbit Monoclonal Antibody, Clone B4H8.10	B4H8.10	Rabbit 🐰	👤 🐷 🐶 +	IHC-P, IHC-F, ICC & WB
52	Anti-CD117/c-Kit Rabbit Monoclonal Antibody, Clone B4H5.11	B4H5.11	Rabbit 🐰	👤 🐷 🐶 +	IHC-P, IHC-F, ICC & WB
53	Anti-CK-19 (Cytokeratin-19) Rabbit Monoclonal Antibody, Clone B4H6.6	B4H6.6	Rabbit 🐰	👤 🐷 🐶 +	IHC-P, IHC-F, ICC & WB
54	Anti-SATB2 Rabbit Monoclonal Antibody, Clone B4H6.7	B4H6.7	Rabbit 🐰	👤 🐷 🐶 +	IHC-P, IHC-F, ICC & WB
55	Anti-Napsin-A Rabbit Monoclonal Antibody, Clone B4H6.8	B4H6.8	Rabbit 🐰	👤 🐷 🐶 +	IHC-P, IHC-F, ICC & WB
56	Anti-TPO (Thyroid peroxidase) Rabbit Monoclonal Antibody, Clone B4H6.10	B4H6.10	Rabbit 🐰	👤 🐷 🐶 +	IHC-P, IHC-F, ICC & WB
57	Anti-MyoD1 Rabbit Monoclonal Antibody, Clone B4H6.11	B4H6.11	Rabbit 🐰	👤 🐷 🐶 +	IHC-P, IHC-F, ICC & WB
58	Anti-CD21 Rabbit Monoclonal Antibody, Clone B4H7.4	B4H7.4	Rabbit 🐰	👤 🐷 🐶 +	IHC-P, IHC-F, ICC & WB
59	Anti-Arginase-1 (ARG1) Rabbit Monoclonal Antibody, Clone B4H7.9	B4H7.9	Rabbit 🐰	👤 🐷 🐶 +	IHC-P, IHC-F, ICC & WB
60	Anti-Cytokeratin 5/Cytokeratin 6 (CK-5/CK-6) Rabbit Monoclonal Antibody, Clone B4H4.3	B4H4.3	Rabbit 🐰	👤 🐷 🐶 +	IHC-P, IHC-F, ICC & WB
61	Anti-Cytokeratin 5 Rabbit Monoclonal Antibody, Clone B3H2.8	B3H2.8	Rabbit 🐰	👤 🐷 🐶 +	IHC-P, IHC-F, ICC & WB
62	Anti-p63 (Tumor Protein 63) Rabbit Monoclonal Antibody, Clone B4H2.11	B4H2.11	Rabbit 🐰	👤 🐷 🐶 +	IHC-P, IHC-F, ICC & WB
63	Anti-hCG (Human Chorionic Gonadotropin) Rabbit Monoclonal Antibody, Clone B4H3.2	B4H3.2	Rabbit 🐰	👤 🐷 🐶 +	IHC-P, IHC-F, ICC & WB
64	Anti-Paired Box Protein PAX-5 Rabbit Monoclonal Antibody, Clone B4H3.3	B4H3.3	Rabbit 🐰	👤 🐷 🐶 +	IHC-P, IHC-F, ICC & WB
65	Anti-MART1 Rabbit Monoclonal Antibody, Clone B4H3.5	B4H3.5	Rabbit 🐰	👤 🐷 🐶 +	IHC-P, IHC-F, ICC & WB
66	Anti-OX40 (CD134) Rabbit Monoclonal Antibody, Clone B4H1.5	B4H1.5	Rabbit 🐰	👤 🐷 🐶 +	IHC-P, IHC-F, ICC & WB
67	Anti-ALK Rabbit Monoclonal Antibody, Clone B4H6.3	B4H6.3	Rabbit 🐰	👤 🐷 🐶 +	IHC-P, IHC-F, ICC & WB
68	Anti-Annexin A1 Rabbit Monoclonal Antibody, Clone B5H2.6	B5H2.6	Rabbit 🐰	👤 🐷 🐶 +	IHC-P, IHC-F, ICC & WB
69	Anti-GFAP Rabbit Monoclonal Antibody, Clone B3H4.8	B3H4.8	Rabbit 🐰	👤 🐷 🐶 +	IHC-P, IHC-F, ICC & WB
70	Anti Sox2 Rabbit Monoclonal Antibody, Clone B5H2.9	B5H2.9	Rabbit 🐰	👤 🐷 🐶 +	IHC-P, IHC-F, ICC & WB
71	Anti-CD30 Rabbit Monoclonal Antibody, Clone B5H2.7	B5H2.7	Rabbit 🐰	👤 🐷 🐶 +	IHC-P, IHC-F, ICC & WB
72	IDH1(R132H) Mutant Rabbit Monoclonal Antibody, Clone H09	H09	Rabbit 🐰	👤 🐷 🐶 +	IHC-P, IHC-F, ICC & WB
73	Anti-TTF1 (Thyroid transcription factor 1) Rabbit Monoclonal Antibody, Clone B4H7.5	B4H7.5	Rabbit 🐰	👤 🐷 🐶 +	IHC-P, IHC-F, ICC & WB
74	Anti-p16INK4a Rabbit Monoclonal Antibody, Clone B5H0.11	B5H0.11	Rabbit 🐰	👤 🐷 🐶 +	IHC-P, IHC-F, ICC & WB
75	Anti-MSH2 Rabbit Monoclonal Antibody, Clone B5H7.10	B5H7.10	Rabbit 🐰	👤 🐷 🐶 +	IHC-P, IHC-F, ICC & WB
76	Anti-MSH3 Rabbit Monoclonal Antibody, Clone B5H0.7	B5H0.7	Rabbit 🐰	👤 🐷 🐶 +	IHC-P, IHC-F, ICC & WB
77	Anti-MSH6 Rabbit Monoclonal Antibody, Clone B4H7.8	B4H7.8	Rabbit 🐰	👤 🐷 🐶 +	IHC-P, IHC-F, ICC & WB
78	Anti-HER2 (c-erbB-2) Rabbit Monoclonal Antibody, Clone BH228	BH228	Rabbit 🐰	👤 🐷 🐶 +	IHC-P, IHC-F, ICC & WB
79	Anti-Progesterone Receptor (PR) Rabbit Monoclonal Antibody, Clone BH357	BH357	Rabbit 🐰	👤 🐷 🐶 +	IHC-P, IHC-F, ICC & WB
80	Anti-ER-alpha Rabbit Monoclonal Antibody, Clone BH292	BH292	Rabbit 🐰	👤 🐷 🐶 +	IHC-P, IHC-F, ICC & WB
81	Anti-Bcl-6 Mouse Monoclonal Antibody, Clone BCL6/2497R	BCL6/2497R	Mouse 🐁	👤 🐰 🐶 +	IHC-P, IHC-F, ICC & WB
82	Anti-CD43 (T-Cell Marker) Mouse Monoclonal Antibody; Clone DF-T1	DF-T1	Mouse 🐁	👤 🐰 🐶 +	IHC-P, IHC-F, ICC & WB
83	Anti-CD99 / MIC2 (Ewing's Sarcoma Marker) Mouse Monoclonal Antibody; Clone 12E7	12E7	Mouse 🐁	👤 🐰 🐶 +	IHC-P, IHC-F, ICC & WB
84	Anti-AFP (Alpha Fetoprotein) Mouse Monoclonal Antibody; Clone SPM334	SPM334	Mouse 🐁	👤 🐰 🐶 +	IHC-P, IHC-F, ICC & WB
85	Anti-Bcl-2 Mouse Monoclonal Antibody; Clone 124	124	Mouse 🐁	👤 🐰 🐶 +	IHC-P, IHC-F, ICC & WB
86	Anti-CA19-9/Sialyl Lewis x (GI Tumor Marker) Mouse Monoclonal Antibody; Clone 121SLE	121SLE	Mouse 🐁	👤 🐰 🐶 +	IHC-P, IHC-F, ICC & WB
87	Anti-Calponin-1 (Smooth Muscle Marker) Mouse Monoclonal Antibody, Clone SPM169	SPM169	Mouse 🐁	👤 🐰 🐶 +	IHC-P, IHC-F, ICC & WB
88	Anti-CD15 / FUT4 (Reed-Sternberg Cell Marker) Mouse Monoclonal Antibody, Clone Leu-M1 (MMA)	Leu-M1 (MMA)	Mouse 🐁	👤 🐰 🐶 +	IHC-P, IHC-F, ICC & WB
89	Anti-CD45 / LCA (Leukocyte Marker) Mouse Monoclonal Antibody, Clone 2B11 & PD7/26	2B11 & PD7/26	Mouse 🐁	👤 🐰 🐶 +	IHC-P, IHC-F, ICC & WB
90	Anti-CD45RO, T-Cell Mouse Monoclonal Antibody, Clone UCHL1	UCHL1	Mouse 🐁	👤 🐰 🐶 +	IHC-P, IHC-F, ICC & WB
91	Anti-CD57 (HNK-1) Mouse Monoclonal Antibody, Clone NK-1	NK-1	Mouse 🐁	👤 🐰 🐶 +	IHC-P, IHC-F, ICC & WB
92	Anti-CD68 (Macrophage Marker) Mouse Monoclonal Antibody, Clone KP1	KP1	Mouse 🐁	👤 🐰 🐶 +	IHC-P, IHC-F, ICC & WB
93	Anti-CDX2 (GI Epithelial Marker) Mouse Monoclonal Antibody, Clone CDX2/1690	CDX2/1690	Mouse 🐁	👤 🐰 🐶 +	IHC-P, IHC-F, ICC & WB
94	Anti-Glypican-3 (GPC3) Mouse Monoclonal Antibody, Clone 1G12	1G12	Mouse 🐁	👤 🐰 🐶 +	IHC-P, IHC-F, ICC & WB
95	Anti-Cytokeratin, Pan; Clones AE1 & Ae3	AE1 & Ae3	Mouse 🐁	👤 🐰 🐶 +	IHC-P, IHC-F, ICC & WB
96	Anti-c-Myc Oncoprotein Mouse Monoclonal Antibody, Clone 9E10.3	9E10.3	Mouse 🐁	👤 🐰 🐶 +	IHC-P, IHC-F, ICC & WB
97	Anti-Ep-CAM / CD326 (Epithelial Marker) Mouse Monoclonal Antibody, Clone MOC-31	MOC-31	Mouse 🐁	👤 🐰 🐶 +	IHC-P, IHC-F, ICC & WB



149	Anti-Foxp1 Rabbit Monoclonal Antibody	B5H0.4	Rabbit						IHC-P, IHC-F, ICC & WB
150	Anti-ZAP70 Rabbit Monoclonal Antibody	B5H0.10	Rabbit						IHC-P, IHC-F, ICC & WB
151	Anti-CD278 (ICOS) Rabbit Monoclonal Antibody	B5H1.9	Rabbit						IHC-P, IHC-F, ICC & WB
152	Anti-CD25 (IL2R $\alpha$ ) Rabbit Monoclonal Antibody	B5H1.10	Rabbit						IHC-P, IHC-F, ICC & WB
153	Anti-p120 Catenin Rabbit Monoclonal Antibody	B4H5.5	Rabbit						IHC-P, IHC-F, ICC & WB
154	Anti-CALD1 (Caldesmon) Rabbit Monoclonal Antibody	B4H9.8	Rabbit						IHC-P, IHC-F, ICC & WB
155	Anti-TOP2A (Topoisomerase II $\alpha$ ) Rabbit Monoclonal Antibody	B4H9.6	Rabbit						IHC-P, IHC-F, ICC & WB
156	Anti-BAG-1 Rabbit Monoclonal Antibody	B4H5.8	Rabbit						IHC-P, IHC-F, ICC & WB
157	Anti-SP-B (Surfactant Protein B) Rabbit Monoclonal Antibody	B4H7.2	Rabbit						IHC-P, IHC-F, ICC & WB
158	Anti-c-Fos Rabbit Monoclonal Antibody	B4H7.6	Rabbit						IHC-P, IHC-F, ICC & WB
159	Anti-BOB-1/OBF-1 Rabbit Monoclonal Antibody	B4H7.10	Rabbit						IHC-P, IHC-F, ICC & WB
160	Anti-Syntaxin-1A Rabbit Monoclonal Antibody, Clone RM367	RM367	Rabbit						IHC-P, IHC-F, ICC & WB
161	Anti-PEG (methoxy group) Rabbit Monoclonal Antibody	RM105	Rabbit						IHC-P, IHC-F, ICC & WB
162	Anti-NeuN (Fox3, RBFOX3) Rabbit Monoclonal Antibody	RM312	Rabbit						IHC-P, IHC-F, ICC & WB
163	Anti-PLAP (Placental alkaline phosphatase) Rabbit Monoclonal Antibody	B4H1.9	Rabbit						IHC-P, IHC-F, ICC & WB
164	Anti-BAG-1L Rabbit Monoclonal Antibody	B4H1.2	Rabbit						IHC-P, IHC-F, ICC & WB
165	Anti-Phospho-Acetyl CoA Carboxylase (Ser79) Rabbit Monoclonal Antibody	RM270	Rabbit						IHC-P, IHC-F, ICC & WB
166	Anti-Phospho-Acetyl CoA Carboxylase (Ser79) Rabbit Monoclonal Antibody	RM270	Rabbit						IHC-P, IHC-F, ICC & WB
167	Anti-Smac Rabbit Monoclonal Antibody	RM271	Rabbit						IHC-P, IHC-F, ICC & WB
168	Anti-JAM1 Rabbit Monoclonal Antibody	RM275	Rabbit						IHC-P, IHC-F, ICC & WB
169	Anti-Smad4 Rabbit Monoclonal Antibody	RM277	Rabbit						IHC-P, IHC-F, ICC & WB
170	Anti-HSP27 (Heat Shock Protein 27) Antibody	G3.1	Mouse						IHC-P, IHC-F, ICC & WB
171	Anti-HSP60 (Heat Shock Protein 60) Antibody	RM263	Mouse						IHC-P, IHC-F, ICC & WB
172	Anti-Carcinoembryonic Antigen (CEA) / CD66 Antibody	COL-1	Mouse						IHC-P, IHC-F, ICC & WB
173	Anti-MUC1 / EMA / CD227 (Epithelial Marker) Antibody	GP1.4. & E29	Mouse						IHC-P, IHC-F, ICC & WB
174	Anti-MUC6 (Mucin 6 / Gastric Mucin) Antibody	CLH5	Mouse						IHC-P, IHC-F, ICC & WB
175	Anti-c-Myc Oncoprotein; Clone 9E10.3	9E10.3	Mouse						IHC-P, IHC-F, ICC & WB
176	Anti-Carcinoembryonic Antigen (CEA) / CD66 Antibody	CEA31	Mouse						IHC-P, IHC-F, ICC & WB
177	Anti-CD34 (Hematopoietic Stem Cell & Endothelial Marker) Antibody	QBEnd/10	Mouse						IHC-P, IHC-F, ICC & WB
178	Anti-CD30 / TNFRSF8 (Hodgkin & Reed-Sternberg Cell Marker) Antibody	Ber-H2	Mouse						IHC-P, IHC-F, ICC & WB
179	Anti-CD6 Mouse Monoclonal Antibody, Clone 3F7B5	3F7B5	Mouse						IHC-P, IHC-F, ICC & WB
180	Anti-CD6 Mouse Monoclonal Antibody, Clone 3F7B5	DBA.44	Mouse						IHC-P, IHC-F, ICC & WB
181	Anti-Myoglobin Polyclonal Antibody	NA							IHC-P, IHC-F, ICC & WB
182	Anti- Cytokeratin Antibody, High Molecular Weight, Clone 34bE12	34bE12	Mouse						IHC-P, IHC-F, ICC & WB
183	Anti-CA15-3 Mouse Monoclonal Antibody, Clone GP1.4	GP1.4	Mouse						IHC-P, IHC-F, ICC & WB
184	Anti-CD43 Mouse Monoclonal Antibody, T-Cell Antibody, Clone DG-T1	DG-T1	Mouse						IHC-P, IHC-F, ICC & WB
185	Anti-Melanoma Antibody; Pan	NA	Mouse						IHC-P, IHC-F, ICC & WB
186	Anti-CD3E Rabbit Monoclonal Antibody, Clone B4H4.6	B4H4.6	Mouse						IHC-P, IHC-F, ICC & WB
187	Anti-CA-125 mouse monoclonal Antibody	OC125	Mouse						IHC-P, IHC-F, ICC & WB
188	Anti-CD138 mouse monoclonal Antibody	B-A38	Mouse						IHC-P, IHC-F, ICC & WB
189	Anti-ATRX mouse monoclonal Antibody	D5	Mouse						IHC-P, IHC-F, ICC & WB
190	Anti-CD23 (human) monoclonal antibody, Clone 9p25	9p25	Mouse						IHC-P, IHC-F, ICC & WB
191	Anti-CD35 Recombinant monoclonal antibody (8C12)	8C12	Mouse						IHC-P, IHC-F, ICC & WB
192	Anti-Lymphatic endothelial marker (human) monoclonal antibody (D2-40)	D2-40	Mouse						IHC-P, IHC-F, ICC & WB
193	Anti-AN01 / DOG1 / TMEM16A Rabbit Monoclonal Antibody, Clone Rm440	B5H4.2	Mouse						IHC-P, IHC-F, ICC & WB
194	Anti-LMP-1 (Epstein-Barr virus) clonal antibody, Clone D24-G	D24-G	Mouse						IHC-P, IHC-F, ICC & WB
195	Anti-Trimethyl-Histone H3 (Lys27) Rabbit Monoclonal Antibody, Clone RM175; H3K27me3, Histone H3 (trimethyl K27);	RM175	Mouse						IHC-P, IHC-F, ICC & WB
196	Anti-MyoD1 (Rhabdomyosarcoma Marker); Clone 5.8A (Concentrate)	5.8A	Mouse						IHC-P, IHC-F, ICC & WB
197	Anti-p53 Tumor Suppressor Protein; Clone DO-7 (Concentrate)	DO-7	Mouse						IHC-P, IHC-F, ICC & WB
198	Anti-PD-1 (CD279) Rabbit Monoclonal Antibody, Clone RM309	RM309	Rabbit						IHC-P, IHC-F, ICC & WB
199	Anti-Stat6 Rabbit Monoclonal Antibody, Clone B5H7.6	B5H7.6	Rabbit						IHC-P, IHC-F, ICC & WB
200	Anti-Nkx3.1 Rabbit Monoclonal Antibody, Clone B5H3.2	B5H3.2	Rabbit						IHC-P, IHC-F, ICC & WB
201	Anti-Histone H3.3 G34W Rabbit Monoclonal Antibody, Clone RM263; Histone H3.3 G34W Mutant	RM263	Rabbit						IHC-P, IHC-F, ICC & WB
202	Anti-PD-L1 (CD274) (B7-H1) Rabbit Monoclonal Antibody	RM320	Rabbit						IHC-P, IHC-F, ICC & WB



Contact : +91-728031389

**Bioheaven360 Genotec Pvt. Ltd.**

606, Ganga Tower G6, Sector D6, Vasant Kunj, New Delhi-110070

✉ info@bioheaven360.com

🌐 www.bioheaven360.com

